

- Notes
- Legend**
- Study Area Outline
 - Corridor 1
 - Corridor 1A
 - Corridor 2
 - Corridor 2A
 - Corridor 2B
 - Corridor 3
 - Corridor 4

Archaeological Development Services Limited

Windsor House,
11 Fairview Strand,
Fairview,
Dublin 1.

Tel: 01-8531009
Fax: 01-8531036
Web: www.adsireland.ie
Email: info@adsireland.ie

- Archaeological Constraints: Recorded Monuments
- Archaeological Constraints: Rivers
- Archaeological Constraints: Areas of Potential
- Architectural Constraints
- Key Constraints

ROSCOMMON COUNTY COUNCIL

Courthouse,
Roscommon.
Phone: 090-6637100

Majella Hunt
Director of Services

NATIONAL ROADS DESIGN OFFICE ROSCOMMON

Racecourse Rd.
Roscommon.
Phone: 090 6627004

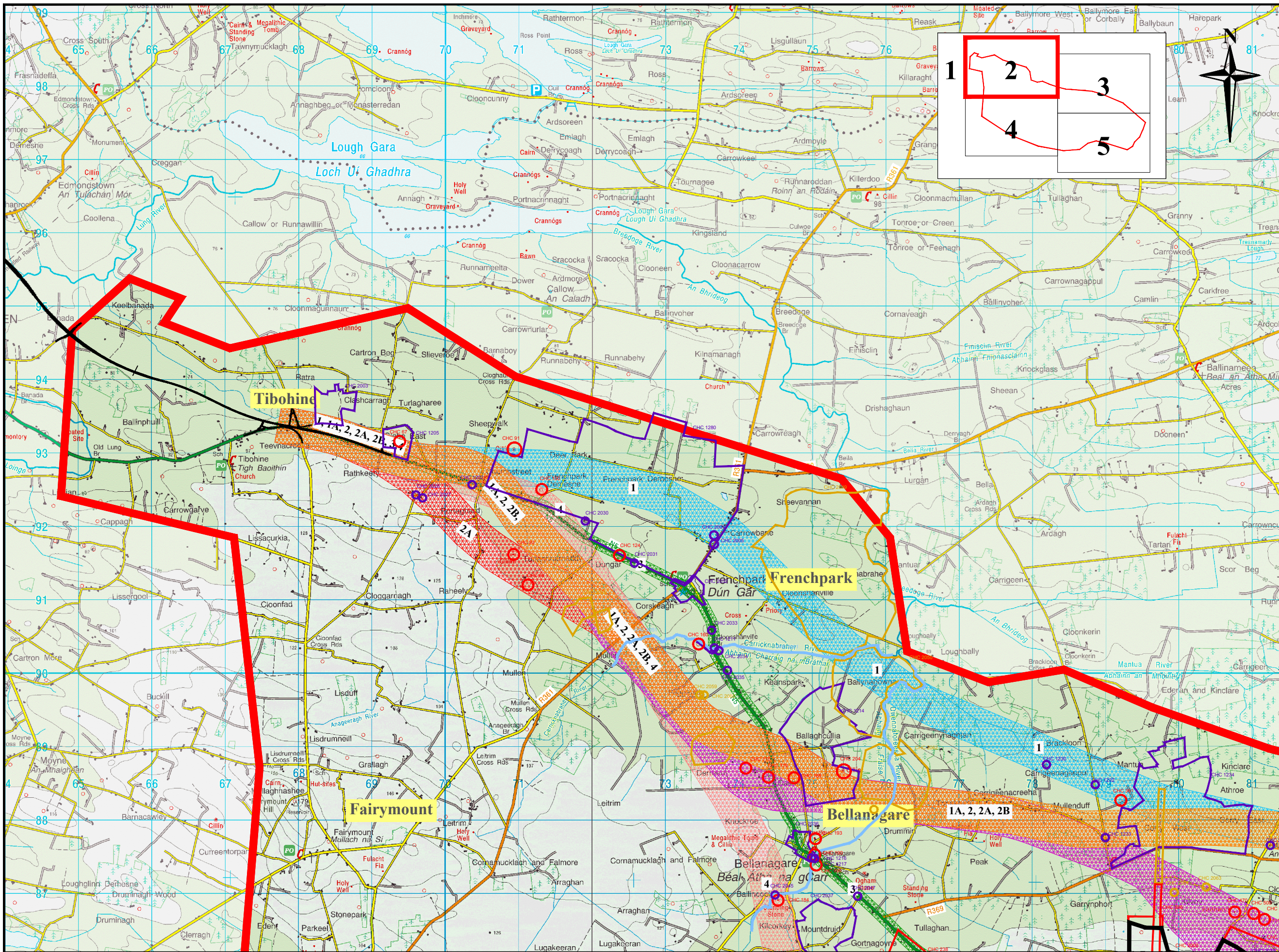
Martin Curley, B.E., CEng.,
Senior Engineer.

| Rev | Description | Checked | Approved | Date |
|-----|-------------|---------|----------|------|
| | | | | |
| | | | | |
| | | | | |

Project No. & Desc. **RN04250 N5 Strategic Corridor - Route Corridor Selection**

Drawing Title **Archaeology Constraints**

| | | |
|--|------------------------------------|------------------------|
| File Folder P:\Proj\2014\14155\14155-11-REC\CD\CS\101 - R58 Drawing\RD0 Drawing: 2017-RN04250-12-368 (Archaeology drawing).dwg | Drawing No.: RN04250-12-367 | Layout |
| Drawn CG | Scale V N/A | Date 1 of 5 |
| | Scale H 1:100,000 | Date September 2007 |



Notes

Legend

- Study Area Outline
- Corridor 1
- Corridor 1A
- Corridor 2
- Corridor 2A
- Corridor 2B
- Corridor 3
- Corridor 4

Archaeological Development Services Limited

Windsor House,
11 Fairview Strand,
Fairview,
Dublin 1.

Tel: 01-8531009
Fax: 01 8531036
Web: www.adsireland.ie
Email: info@adsireland.ie

- Archaeological Constraints: Recorded Monuments
- Archaeological Constraints: Rivers
- Archaeological Constraints: Areas of Potential
- Architectural Heritage Constraints
- Key Constraints

NDP
PLEAN FORBARTHA NAISIUNTA

NRA
National Roads Authority
An tUdarás um Bóithre Náisiúnta

ROSCOMMON COUNTY COUNCIL
Courthouse,
Roscommon.
Phone: 090-6637100
Majella Hunt
Director of Services

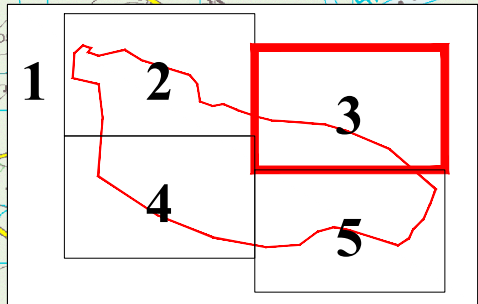
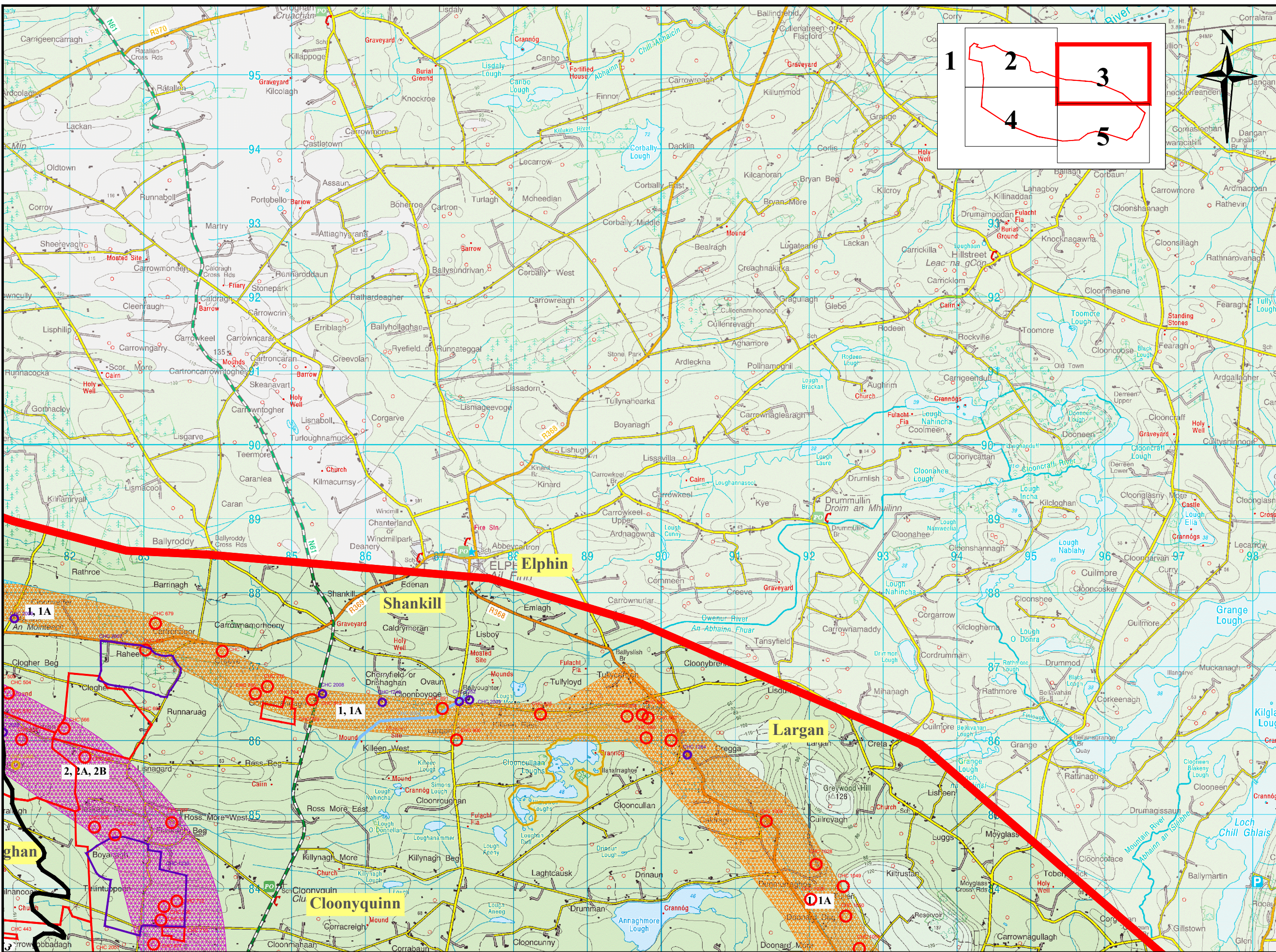
NATIONAL ROADS DESIGN OFFICE ROSCOMMON
Racecourse Rd.
Roscommon.
Phone: 090 6627004
Martin Curley, B.E., CEng.,
Senior Engineer.

| Rev | Description | Checked | Approved | Date |
|-----|------------------|---------|----------|----------|
| 1 | Post Peer Review | | | 28/02/08 |
| | | | | |
| | | | | |

Project No. & Desc.
RN04250 N5 Strategic Corridor- Route Selection

Drawing Title
Archaeology

| | | | |
|--|------------------------------------|---------------|---------------|
| File Folder P:\Proj\2014\14155\14155-1-1-ARC\CDocs\101 - RSR Drawings\RD | Drawing No.: RN04250-12-368 | Layout | 2 of 5 |
| Drawn CG | Scale V NA | Date | December 2007 |
| | Scale H 1:20,000 | | |



Notes

Legend

- Study Area Outline
- Corridor 1
- Corridor 1A
- Corridor 2
- Corridor 2A
- Corridor 2B
- Corridor 3
- Corridor 4

Archaeological Development Services Limited

Windsor House,
11 Fairview Strand,
Fairview,
Dublin 1.

Tel: 01-8531009
Fax: 01-8531036
Web: www.adsireland.ie
Email: info@adsireland.ie

- Archaeological Constraints: Recorded Monuments
- Archaeological Constraints: Rivers
- Archaeological Constraints: Areas of Potential
- Architectural Heritage Constraints
- Key Constraints

NDP
PLEAN FORBARTHA NAISIUNTA

NRA
National Roads Authority
An tUdarás um Bóithre Náisiúnta

ROSCOMMON COUNTY COUNCIL
Courthouse,
Roscommon.
Phone: 090-6637100
Majella Hunt
Director of Services

NATIONAL ROADS DESIGN OFFICE ROSCOMMON
Racecourse Rd.
Roscommon.
Phone: 090 6627004
Martin Curley, B.E., CEng.,
Senior Engineer.

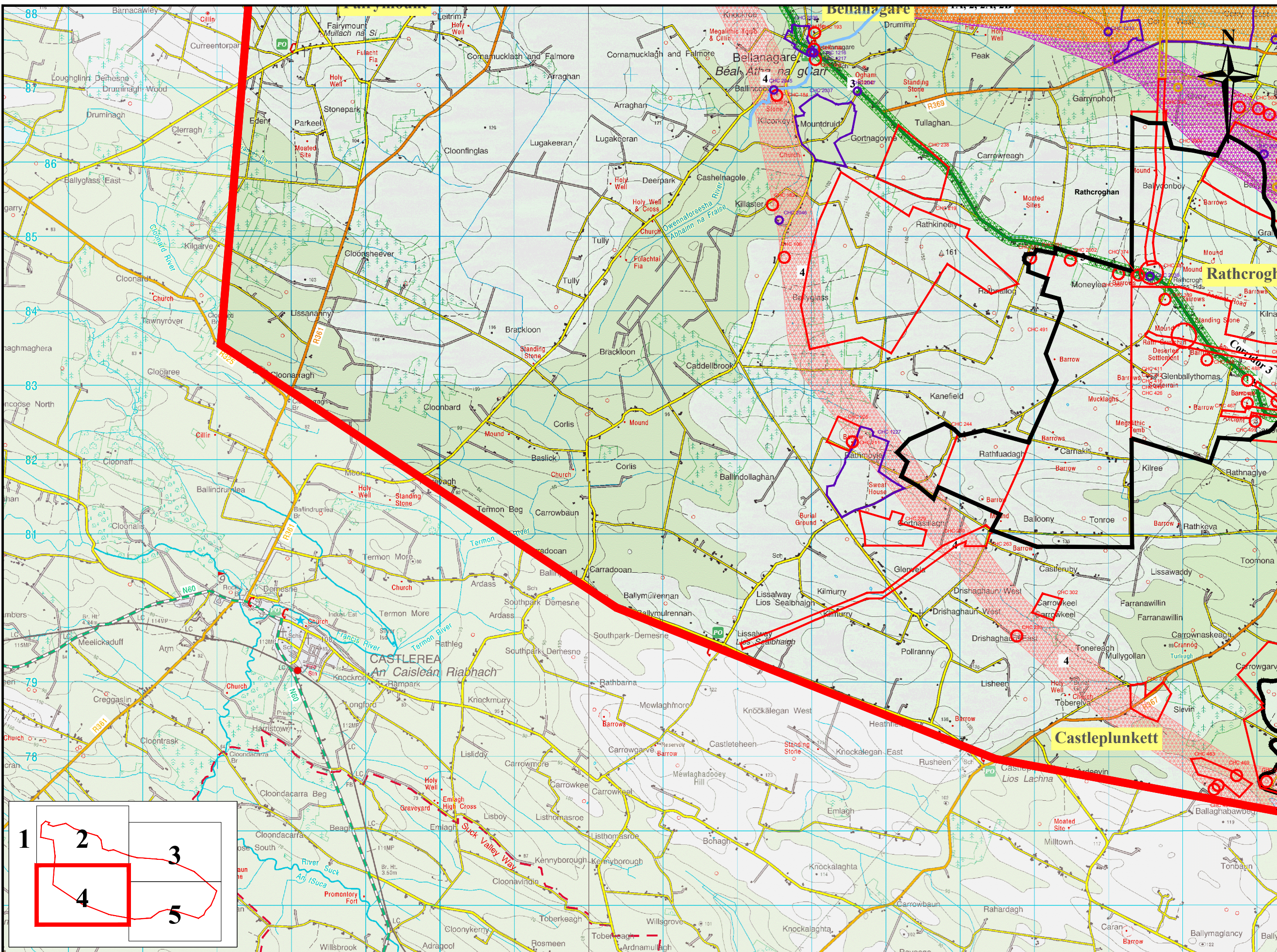
| Rev | Description | Checked | Approved | Date |
|-----|------------------|---------|----------|----------|
| 1 | Post Peer Review | | | 28/02/08 |
| | | | | |
| | | | | |

Project No. & Desc.
RN04250 N5 Strategic Corridor - Route Corridor Selection

Drawing Title
Archaeology

File Folder
P:\Proj\2014\14155\14155-1-1-REC\CAD\03\101 - R58 Drawings\B03
Drawing No.: RN04250-12-368
Layout 3 of 5

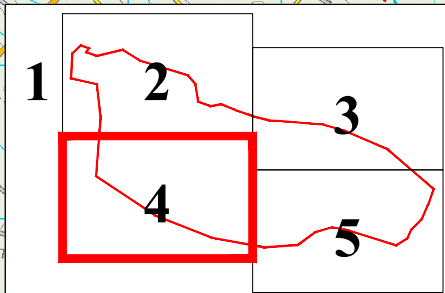
Scale V NA
Scale H 1:20,000
Date September 2007



Notes

Legend

- Study Area Outline
- Corridor 1
- Corridor 1A
- Corridor 2
- Corridor 2A
- Corridor 2B
- Corridor 3
- Corridor 4



Archaeological Development Services Limited

Windsor House,
11 Fairview Strand,
Fairview,
Dublin 1.

Tel: 01-8531009
Fax: 01 8531036
Web: www.adsireland.ie
Email: info@adsireland.ie

- Archaeological Constraints: Recorded Monuments
- Archaeological Constraints: Rivers
- Archaeological Constraints: Areas of Potential
- Architectural Heritage Constraints
- Key Constraints

NDP
PLEAN FORBARTHA NAÍSIÚNTA

NRA
National Roads Authority
An tÚdarás um Bóithre Náisiúnta

ROSCOMMON COUNTY COUNCIL
Courthouse,
Roscommon.
Phone: 090-6637100
Majella Hunt
Director of Services

NATIONAL ROADS DESIGN OFFICE ROSCOMMON
Racecourse Rd.
Roscommon.
Phone: 090 6627004
Martin Curley, B.E., CEng.,
Senior Engineer.

| Rev | Description | Checked | Approved | Date |
|-----|------------------|---------|----------|----------|
| 1 | Post Peer Review | | | 28/02/08 |
| | | | | |
| | | | | |

Project No. & Desc.
RN04250 N5 Strategic Corridor - Route Corridor Selection

Drawing Title
Archaeology

File Folder
P:\Proj\2014\14155\14155-1-ARC\CD\03\101 - R58 Drawing\80D
December 2017 RN04250-12-368 (Archaeology drawing).dwg

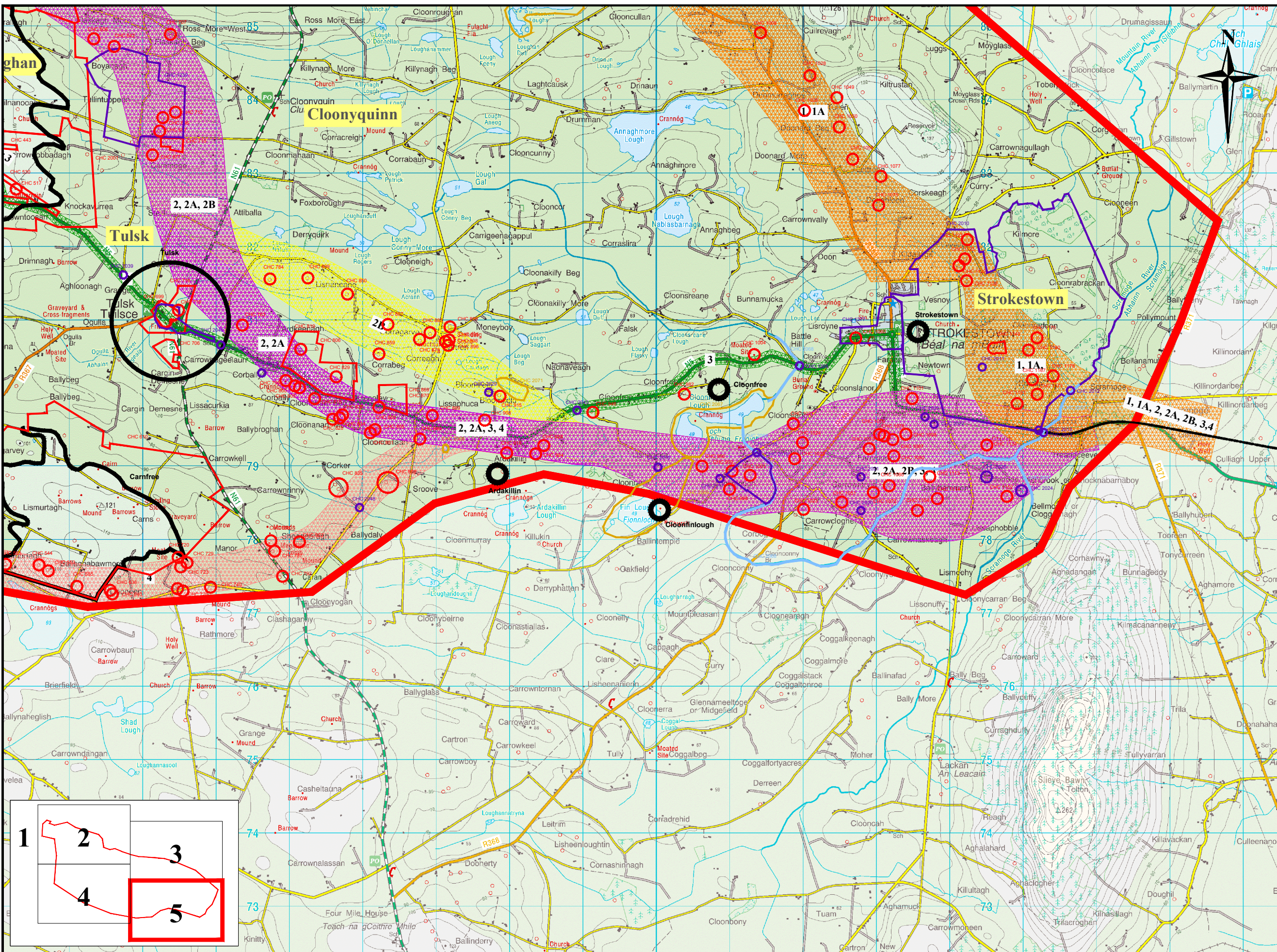
Drawing No.: RN04250-12-368

Scale V: NA

Scale H: 1:20,000

Layout 4 of 5

Date September 2007



Notes

Legend

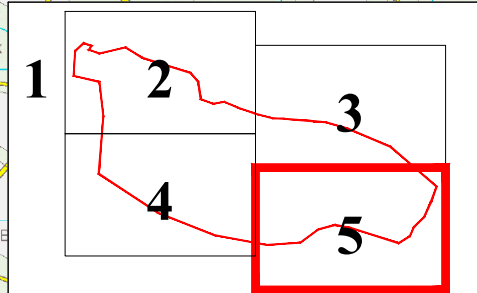
- Study Area Outline
- Corridor 1
- Corridor 1A
- Corridor 2
- Corridor 2A
- Corridor 2B
- Corridor 3
- Corridor 4

Archaeological Development Services Limited

Windsor House,
11 Fairview Strand,
Fairview,
Dublin 1.

Tel: 01-8531009
Fax: 01 8531036
Web: www.adsireland.ie
Email: info@adsireland.ie

- Archaeological Constraints: Recorded Monuments
- Archaeological Constraints: Rivers
- Archaeological Constraints: Areas of Potential
- Architectural Heritage Constraints
- Key Constraints



ROSCOMMON COUNTY COUNCIL

Courthouse,
Roscommon.
Phone: 090-6637100

Majella Hunt
Director of Services

NATIONAL ROADS DESIGN OFFICE ROSCOMMON

Racecourse Rd.
Roscommon.
Phone: 090 6627004

Martin Curley, B.E., CEng.,
Senior Engineer.

| Rev | Description | Checked | Approved | Date |
|-----|------------------|---------|----------|----------|
| 1 | Post Peer Review | | | 28/02/08 |

Project No. & Desc. RN04250 N5 Strategic Corridor - Route Corridor Selection

Drawing Title Archaeology

File Folder P:\Proj\2014\14155\14155-1-REC\CADD\SI\1 - RSR Drawing\RD0
Drawing No. RN04250-12-368
Scale V NA
Scale H 1:20,000

Layout 5 of 5
Date September 2007